



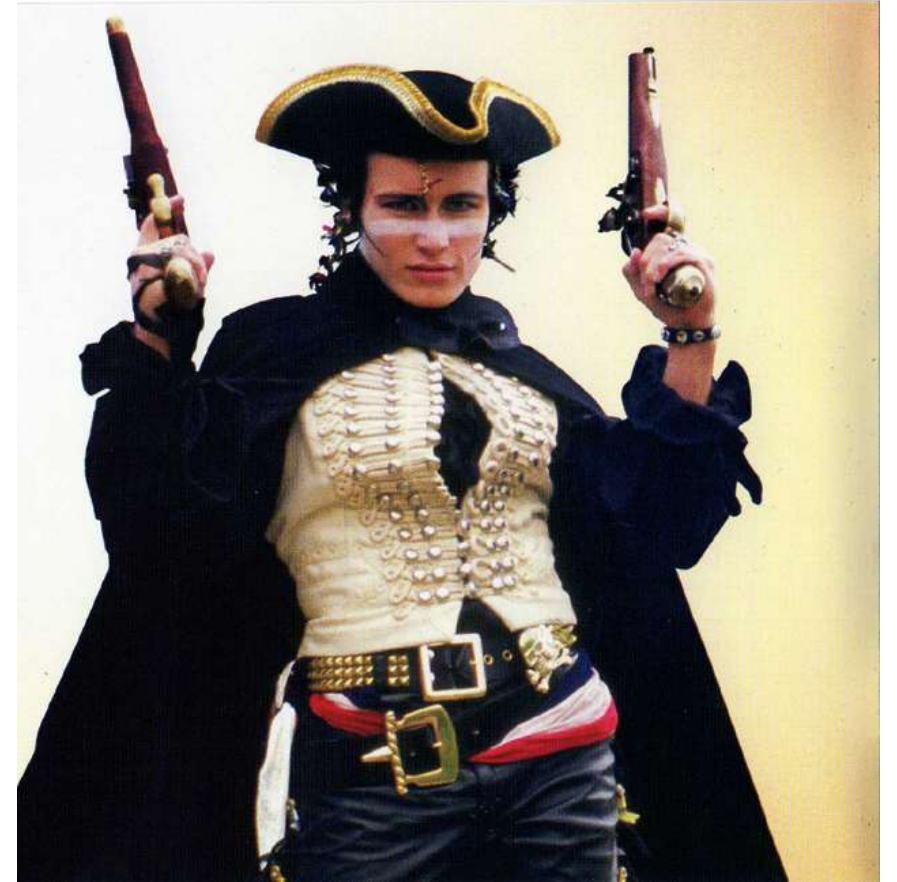
## **Stand & Deliver! – A (polite) demand from the private sector**

**Rob Hopwood – Lead Planning Partner  
Oxford to Cambridge Arc**

22 June 2021

# THE ARC SPATIAL PLAN'S ULTIMATE OBJECTIVE

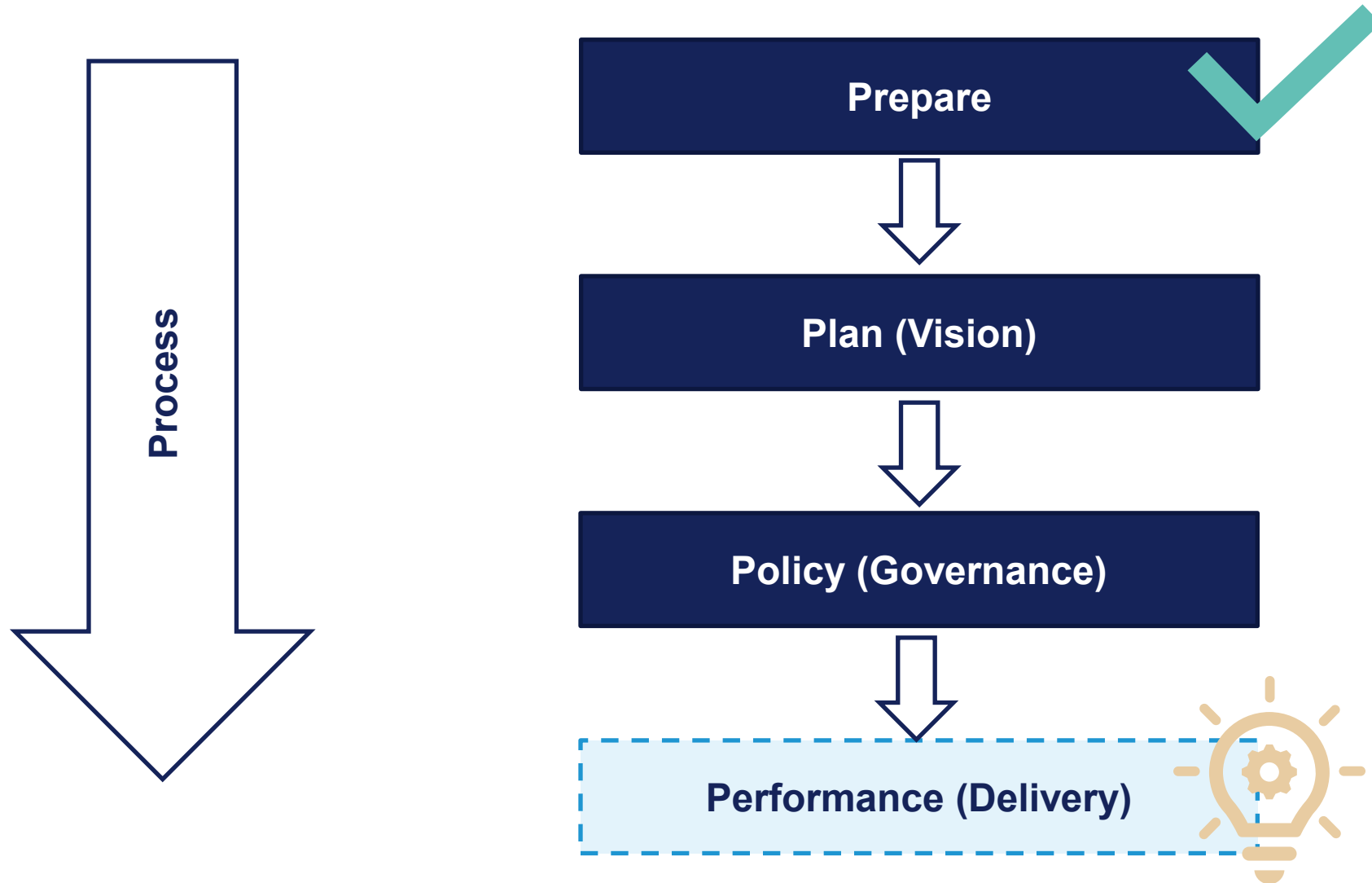
By 2050, to deliver well connected infrastructure, jobs, homes, facilities and services, in beautifully designed built and natural environments which are non-carbon producing.



(I am not asking for much, am I?)

# THE ESSENCE OF THE ARC SPATIAL FRAMEWORK

## HOW DO WE GET TO DELIVERY?



## STAND – THE PROBLEMS THE ARC SPATIAL PLAN CAN SOLVE?

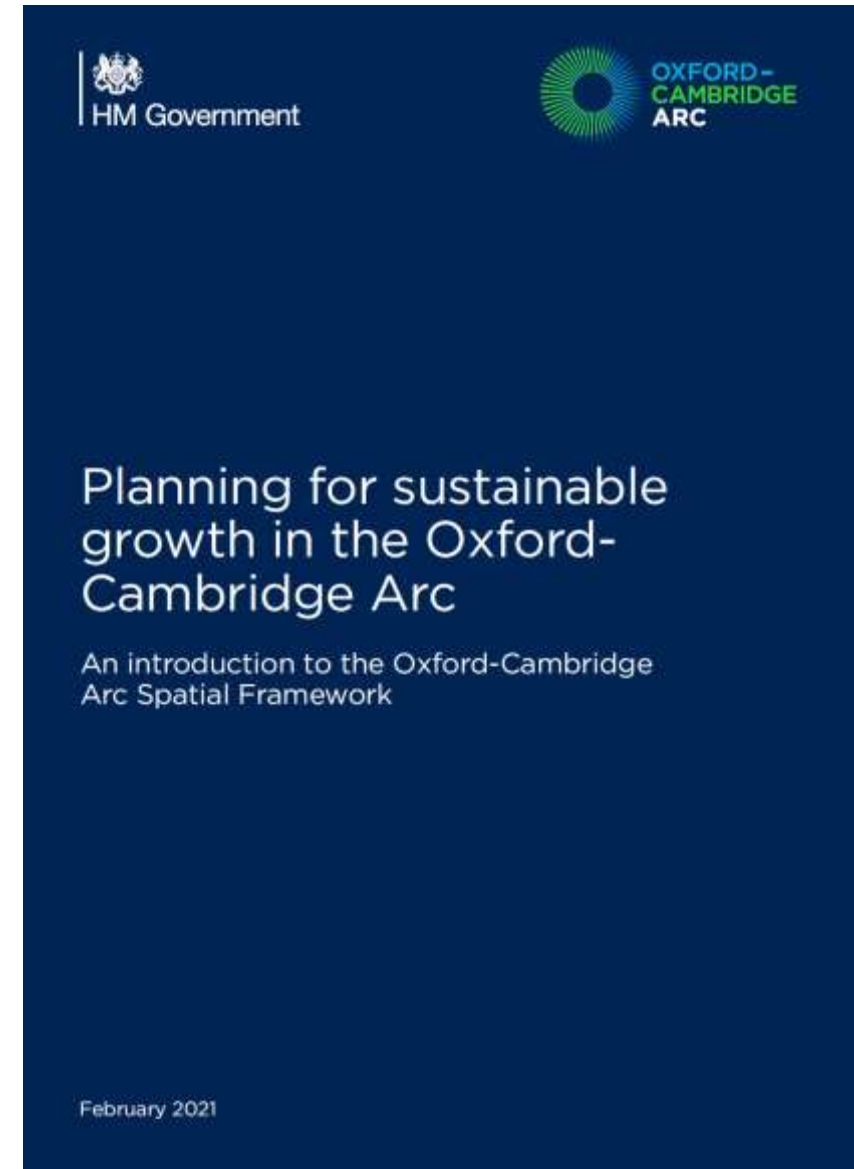
- Imbalance of homes and jobs (commuting)
- Poor East-West connecting (commuting)
- Housing affordability disparity across the Arc
- Levelling-up the centre (and consolidating the ends)
- Clunky development plans
- Water and energy resources

(Other problems are also available!)

# STANDING – THE UNANSWERED QUESTIONS

“We have also made a commitment to **examine the case for development corporations**, linked to the new transport hubs around East West Rail stations. **But action is needed across the wider area...**”

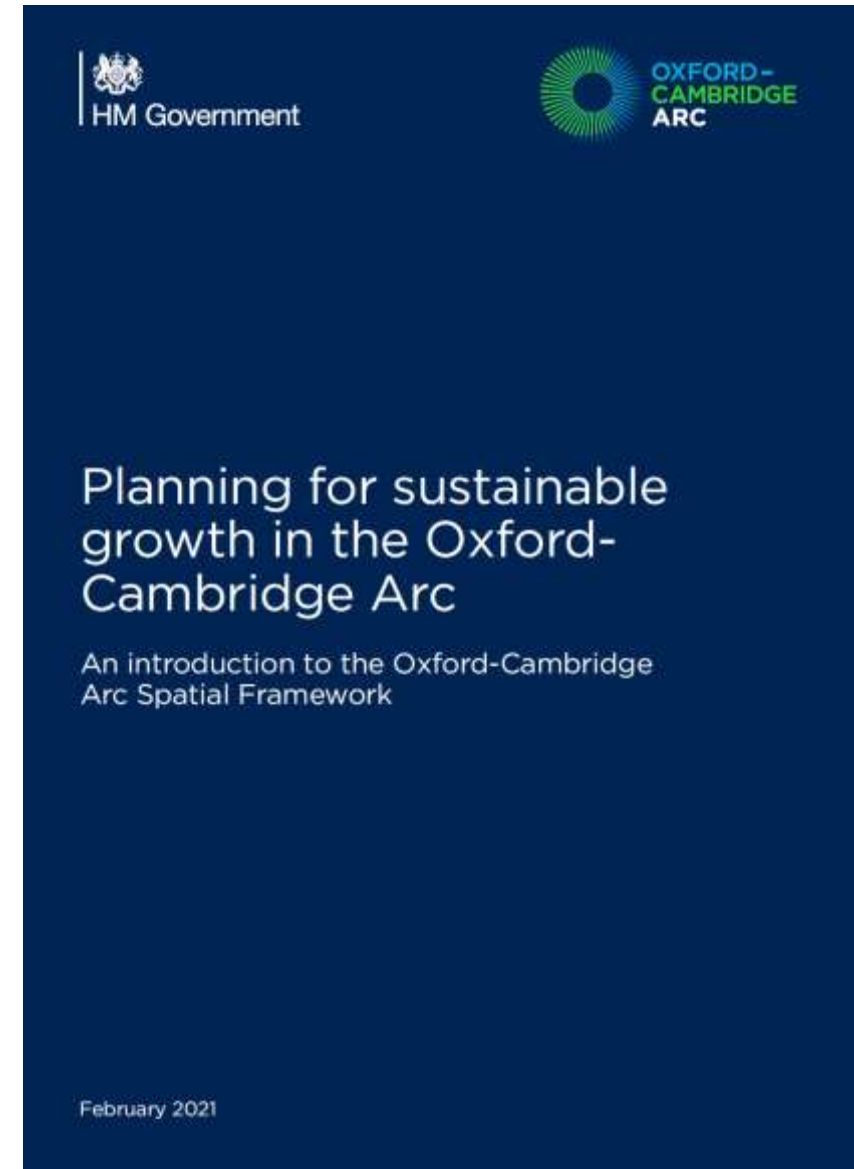
Paragraph 1.23



# STANDING – THE UNANSWERED QUESTIONS

“Local councils...do not have all the levers needed to develop a genuinely integrated plan. **Government needs to play a supporting role** to bring together a strategic approach at the Arc level...”

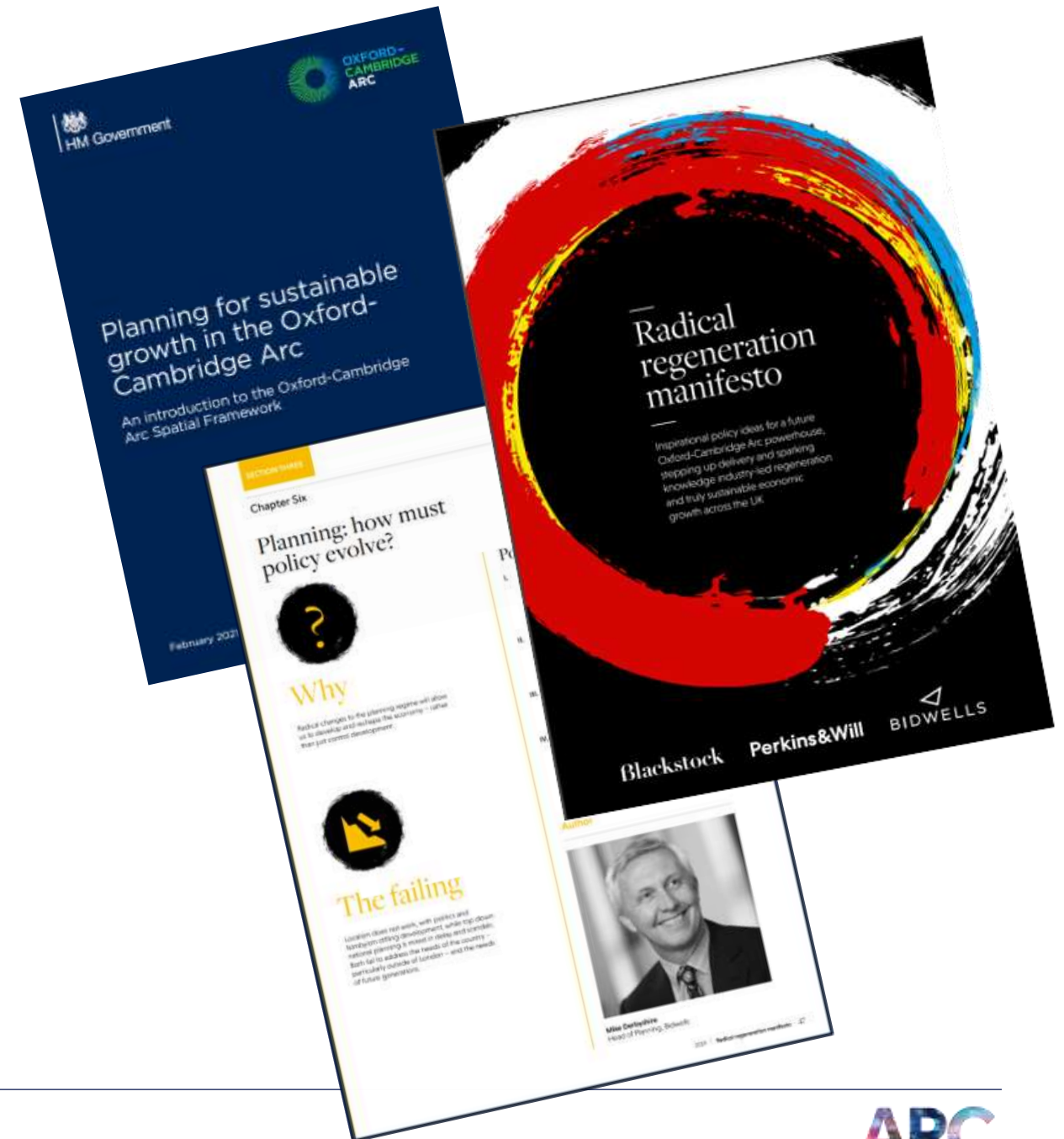
Paragraph 1.25



# STANDING – THE UNANSWERED QUESTIONS

“We can only realise the full potential of the Arc if we also take a different approach to planning... **and industry calls for an Arc-wide planning body.**” (Bidwells’ Radical Regeneration Manifesto)

Paragraph 1.26

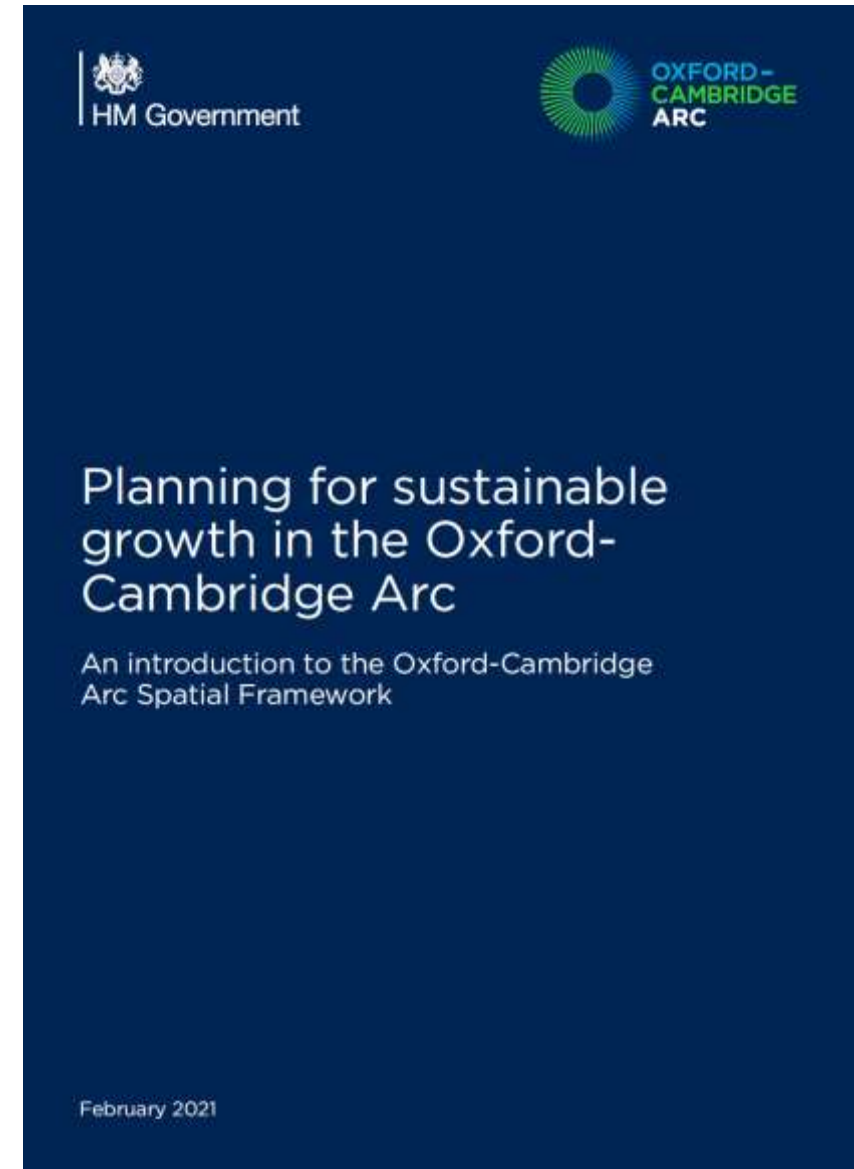




# STANDING – THE UNANSWERED QUESTIONS

“Spatial Framework will be adaptable... provides certainty for communities, local councils and investors about where growth will happen... **but it will also need to be flexible and adaptive to change as it happens.**”

Paragraph 2.2





# STILL STANDING – EXISTING ARC LEADERSHIP GROUPS

**Arc Leadership Plenary**

- All Member Growth Boards
- All Member Local Authorities
- All Member Local Enterprise Partnerships
- All Member Arc Universities Group (AUG)
- Government Arc Ministries
- Relevant Agencies, Health Bodies

**Arc Leadership Executive**

(Growth Board Leader Representatives, AUG Chair, Enterprise Partnerships Chair, Health Bodies Chair)

**Arc Chief Executives Group**

- Local Authorities
- Local Enterprise Partnerships
- Arc Universities Group

Productivity

Connectivity

Environment

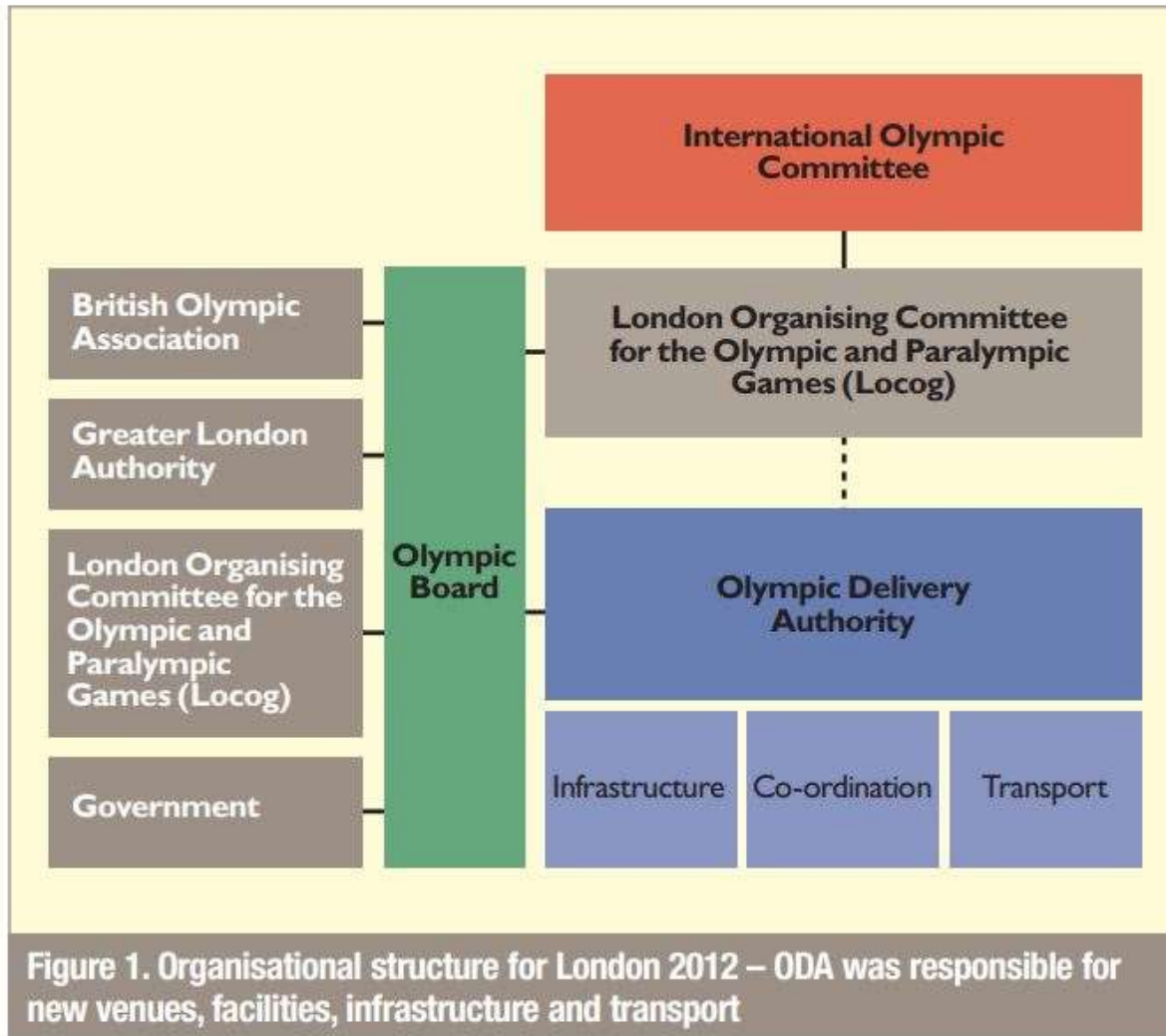
Place

Government  
Arc Team

Is there something missing?

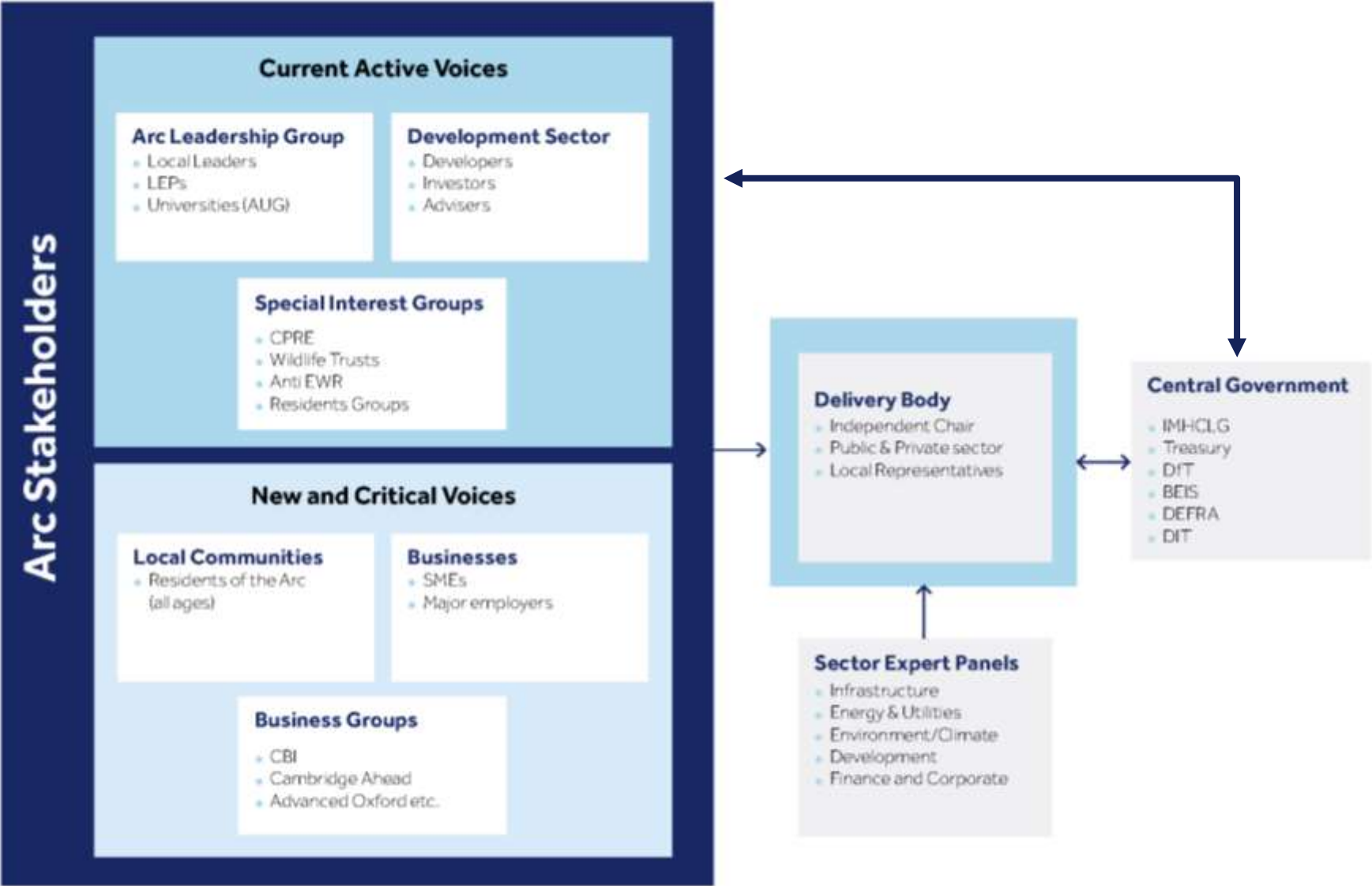
# INTENDING TO DELIVER

## 2012 DELIVERY MODEL - OLYMPIC DELIVERY AUTHORITY STRUCTURE



Great Britain  
29 Golds  
17 Silver  
19 Bronze

# LOOKING TO DELIVER – POTENTIAL GOVERNANCE STRUCTURE



# DELIVER!

- Project speed?!
- Simplify governance
- Duty to deliver (NPPF)
- Arc-wide delivery body
- Certainty and commitment
- Leadership





**Rob Hopwood**

Partner, Arc Lead

Bidwells

[rob.hopwood@bidwells.co.uk](mailto:rob.hopwood@bidwells.co.uk)

07831 221437

[bidwells.co.uk/arc](http://bidwells.co.uk/arc)